

casaterra

 **VAGHI**

STOFFE KATEGORIE C
TESSUTI CATEGORIA C
FABRICS CATEGORY C

CE ERA

1. TELA / CANVAS
2. 100% POLIESTERE
100% POLYESTER
3. 490 GR/MTL / 490 GR/LM
4. EN 1021 (PARTI 1-2)
EN 1021 (PART 1-2)
5. 10.000 CICLI (UNI EN ISO 12947)
100.000 TURNS (UNI EN ISO 12947)

CURA E MANUTENZIONE CARE AND MAINTENANCE



13CE19



13CE06



13CE07



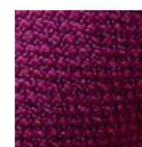
13CE15



13CE12



13CE16



13CE09



13CE30

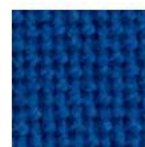
CT TREVI

1. TELA CANVAS
2. 100% POLIESTERE TREVIRA CS
100% POLYESTER TREVIRA CS
3. 630 GR/MTL / 630 GR/LM
4. CLASSE 1 (UNI 9175) EN 1021 (PARTI 1-2)
CLASS 1 (UNI 9175) EN 1021 (PART 1-2)
5. 100.000 CICLI (UNI EN ISO 12947)
100.000 TURNS (UNI EN ISO 12947)

CURA E MANUTENZIONE CARE AND MAINTENANCE



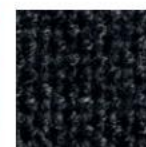
13CT02



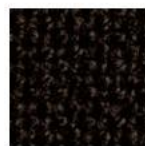
13CT16



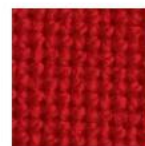
13CT47



13CT32



13CT03



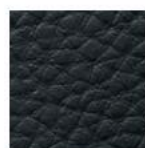
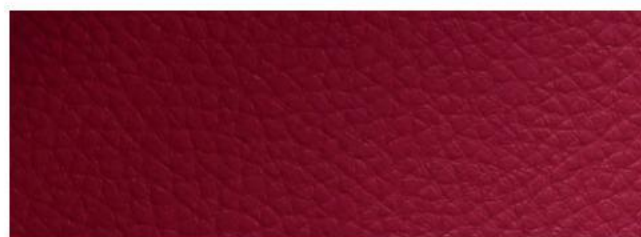
13CT07

CR MERIDA IGNIFUGO

1. SIMILPELLE TRASPIRANTE / BREATHABLE VINYL
2. 41% POLIURETANO - 18% POLIESTERE - 41% COTONE
41% POLYURETHANE - 18% POLYESTER - 41% COTTON
3. 560 GR/MTL / 560 GR/LM
4. CLASSE 1 (UNI 9175)
CLASS 1 (UNI 9175)
5. 100.000 CICLI (UNI EN ISO 12947)
100.000 TURNS (UNI EN ISO 12947)

PRODOTTO PRIVO DI FTALATI / PHTHALATE FREE

CURA E MANUTENZIONE CARE AND MAINTENANCE



13CR32



13CR44



13CR53



13CR52



13CR66



13CR67



13CR11

CROMATURA METALLO METAL CHROMIUM PLATING

1. TRATTAMENTO GALVANICO
CON APPLICAZIONE DI NICHEL E CROMO,
SPESSORE 30/50 µ, FINITURA LUCIDA.
NICKEL AND CHROMIUM PLATING FIXED
WITH GALVANIC TREATMENT, THICKNESS
30/50 µ, GLOSSY FINISH.
7. UNI 10782

CURA E MANUTENZIONE CARE AND MAINTENANCE



CROMATO / CHROMED

VERNICIATURA METALLO METAL COATING

*

1. OLVERI EPOSSI-POLIESTERE
TERMOINDURENTI APPLICATE
ELETTROSTATICAMENTE, SPESSORE 70/90µ,
GLOSS 2-10, FINITURA BUCCIATA
ANTIGRAFFIO.
EPOXY-POLYESTER THERMOSETTING
OWDERS ELECTROSTATICALLY FIXED,
THICKNESS 70/90 µ, GLOSS 2-10,
ANTI-SCRATCH EMBOSSED FINISH.
7. UNI EN ISO 9227

CURA E MANUTENZIONE CARE AND MAINTENANCE



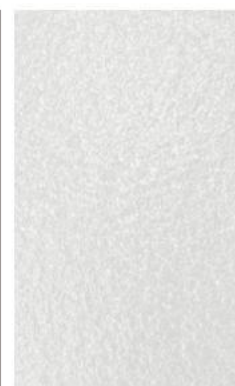
NERO
BLACK



GRIGIO ARGENTO
SILVER GREY RAL 9006



TORTORA
DOVE GREY RAL 1019



BIANCO
WHITE RAL 9016



BRONZO
BRONZE

NOTE NOTES

*I Colori disponibili per ogni linea di prodotto sono elencati nel catalogo generale e nel listino prezzi / The available colours for each product line are listed in the general catalogue and in the price list

** Colori disponibili solo per serie LIBERA LI/LC e serie LIBERA LP/LS / Colours available only for line LIBERA LI/LC and line LIBERA LP/LS



Casa Terra Design GmbH
Hauptstrasse 15
8586 Erlen
Tel. +41 71 558 08 06
info@casaterra.ch
www.casaterra.ch