

casaterra

 **VAGHI**

STOFF KATEGORIE A
TESSUTI CATEGORIA A
FABRIC CATEGORY A

AG GUATEMALA

1. SIMILPELLE / VINYL
2. 88% PVC - 8% POLIESTERE - 4% COTONE
88% PVC - 8% POLYESTER - 4% COTTON
3. 910 GR./MTL / 910 GR./LM
4. CLASSE 1 (UNI 9175)
CLASS 1 (UNI 9175)
5. 100.000 CICLI (UNI EN ISO 12947)
100.000 TURNS (UNI EN ISO 12947)

PRODOTTO PRIVO DI FTALATI / PHTHALATE FREE

CURA E MANUTENZIONE CARE AND MAINTENANCE



13AG22



13AG46



13AG27



13AG98



13AG21



13AG26



13AG07



13AG48



13AG31



13AG05



13AG20



13AG28



13AG71



13AG45



13AG30

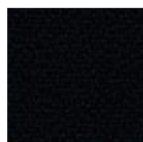


13AG00

AL LEIRIA

1. CREP / CREPE
2. 100% POLIESTERE / 100% POLYESTER
3. 350 GR/MTL / 350 GR/LM
4. CLASSE 1 (UNI 9175) EN 1021 (PARTI 1-2)
CLASS 1 (UNI 9175) EN 1021 (PART 1-2)
5. 150.000 CICLI (UNI EN ISO 12947)
150.000 TURNS (UNI EN ISO 12947)

CURA E MANUTENZIONE CARE AND MAINTENANCE



13AL02



13AL26



13AL07



13AL25



13AL12



13AL06



13AL20



13AL05



13AL21

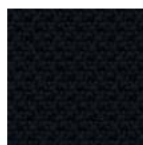
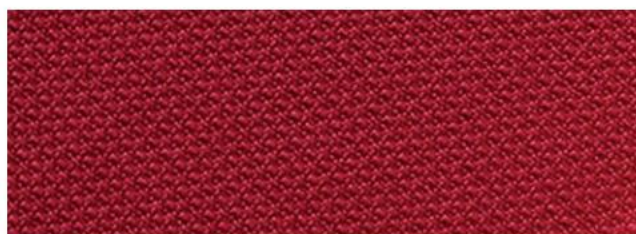


13AL03

AR RADIO

1. TELA / CANVAS
2. 100% POLIESTERE FR / 100% POLYESTER FR
3. 450 GR/MTL / 450 GR/LM
4. EN 1021 (PARTI 1-2)
EN 1021 (PART 1-2)
5. 100.000 CICLI (UNI EN ISO 12947)
100.000 TURNS (UNI EN ISO 12947)

CURA E MANUTENZIONE CARE AND MAINTENANCE



13AR02



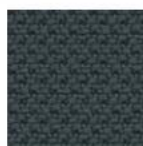
13AR36



13AR34



13AR35



13AR52



13AR26



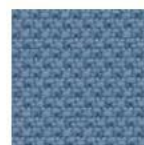
13AR17



13AR45



13AR13



13AR16



13AR40



13AR25

CROMATURA METALLO METAL CHROMIUM PLATING

1. TRATTAMENTO GALVANICO
CON APPLICAZIONE DI NICHEL E CROMO,
SPESSORE 30/50 µ, FINITURA LUCIDA.
NICKEL AND CHROMIUM PLATING FIXED
WITH GALVANIC TREATMENT, THICKNESS
30/50 µ, GLOSSY FINISH.
7. UNI 10782

CURA E MANUTENZIONE CARE AND MAINTENANCE



CROMATO / CHROMED

VERNICIATURA METALLO METAL COATING

*

1. OLVERI EPOSSI-POLIESTERE
TERMOINDURENTI APPLICATE
ELETTROSTATICAMENTE, SPESSORE 70/90µ,
GLOSS 2-10, FINITURA BUCCIATA
ANTIGRAFFIO.
EPOXY-POLYESTER THERMOSETTING
OWDERS ELECTROSTATICALLY FIXED,
THICKNESS 70/90 µ, GLOSS 2-10,
ANTI-SCRATCH EMBOSSED FINISH.
7. UNI EN ISO 9227

CURA E MANUTENZIONE CARE AND MAINTENANCE



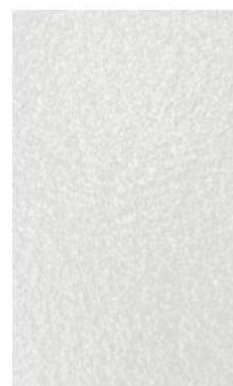
NERO
BLACK



GRIGIO ARGENTO
SILVER GREY RAL 9006



TORTORA
DOVE GREY RAL 1019



BIANCO
WHITE RAL 9016



BRONZO
BRONZE

NOTE NOTES

*I Colori disponibili per ogni linea di prodotto sono elencati nel catalogo generale e nel listino prezzi / The available colours for each product line are listed in the general catalogue and in the price list

** Colori disponibili solo per serie LIBERA LI/LC e serie LIBERA LP/LS / Colours available only for line LIBERA LI/LC and line LIBERA LP/LS



Casa Terra Design GmbH
Hauptstrasse 15
8586 Erlen
Tel. +41 71 558 08 06
info@casaterra.ch
www.casaterra.ch