

casaterra

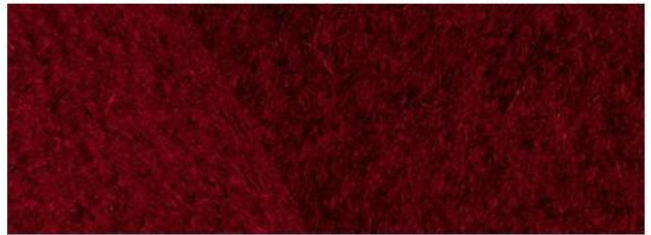
 **VAGHI**

STOFFE UND LEDER KATEGORIE D, E
TESSUTI E PELLI CATEGORIA D, E
FABRICS AND LEATHER CATEGORY D, E

DB BOGOTÀ

1. LANA / WOOL
2. 100% LANA
100% WOOL
3. 825 GR/MTL / 825 GR/LM
4. EN 1021 (PARTI 1-2)
EN 1021 (PART 1-2)
5. 60.000 CICLI (UNI EN ISO 12947)
60.000 TURNS (UNI EN ISO 12947)

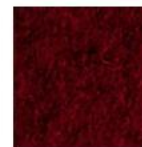
CURA E MANUTENZIONE CARE AND MAINTENANCE



13DB02



13DB06



13DB04



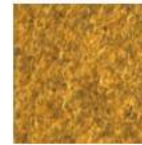
13DB05



13DB12



13DB09



13DB30



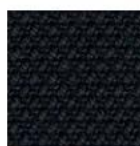
13DB15

ET STEELCUT TRIO 3

by KVADRAT

1. LANA / WOOL
2. 90% LANA - 10% NYLON
90% WOOL - 10% NYLON
3. 770 GR/MTL / 770 GR/LM
4. CLASSE 1 (UNI 9175) EN 1021 (PARTI 1-2)
CLASS 1 (UNI 9175) EN 1021 (PART 1- 2)
5. 100.000 CICLI (UNI EN ISO 12947)
100.000 TURNS (UNI EN ISO 12947)

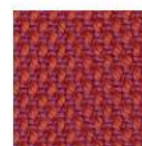
CURA E MANUTENZIONE CARE AND MAINTENANCE



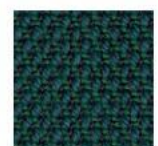
13ET02



13ET36



13ET07



13ET35



13ET08



13ET03

EP PELLE NATURALE

1. VERA PELLE BOVINA, CONCIATA AL CROMO, TINTA IN BOTTE
ALL'ANILINA, SMERIGLIATA E RIFINITA CON RESINE POLIURETANICHE /
OX HIDES, CHROME TANNAGE, ANILINE-DYED, BUFFED AND FINISHED
WITH POLYURETHANE RESINS
6. 0.9 / 1.0 MM

AVVERTENZA: LE IRREGOLARITÀ NATURALI DELLA PELLE, PUNTURE
D'INSETTI, PICCOLE CICATRICI E VARIAZIONI DI COLORE CONFERMANO
L'AUTENTICITÀ DEL MATERIALE, PERTANTO NON SONO MOTIVO DI RECLAMO
NOTICE: NATURAL FEATURES SUCH AS INSECT BITES, SMALL DEFORMITIES
AND COLOR SHADING CONFIRM THE LEATHER'S AUTHENTIC CHARACTER
AND ARE NOT GROUNDS FOR COMPLAINT

CURA E MANUTENZIONE CARE AND MAINTENANCE



13EP02



13EP06



13EP34



13EP05



13EP11



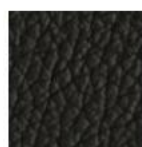
13EP17



13EP07



13EP10



13EP23



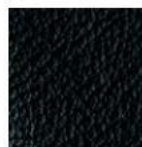
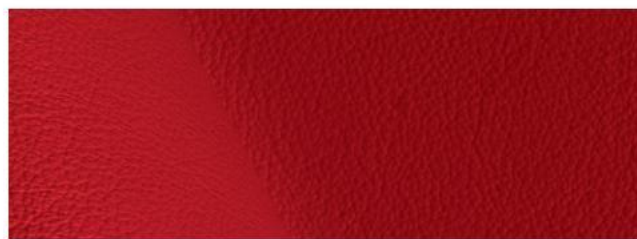
13EP00

FP PELLE EXTRA

1. VERA PELLE BOVINA FIORE, CONCIATA AL CROMO, TINTA IN BOTTE
ALL'ANILINA, GRANA NATURALE /
OX HIDES, CHROME TANNAGE, ANILINE-DYED, NATURAL GRAIN
6. 1.3 / 1.5 MM

AVVERTENZA: LE IRREGOLARITÀ NATURALI DELLA PELLE, PUNTURE
D'INSETTI, PICCOLE CICATRICI E VARIAZIONI DI COLORE CONFERMANO
L'AUTENTICITÀ DEL MATERIALE, PERTANTO NON SONO MOTIVO DI RECLAMO
NOTICE: NATURAL FEATURES SUCH AS INSECT BITES, SMALL DEFORMITIES
AND COLOR SHADING CONFIRM THE LEATHER'S AUTHENTIC CHARACTER
AND ARE NOT GROUNDS FOR COMPLAINT

CURA E MANUTENZIONE CARE AND MAINTENANCE



13FP32



13FP06



13FP04



13FP05



13FP11



13FP03



13FP07



13FP28



13FP12



13FP10

CROMATURA METALLO METAL CHROMIUM PLATING

1. TRATTAMENTO GALVANICO
CON APPLICAZIONE DI NICHEL E CROMO,
SPESSORE 30/50 µ, FINITURA LUCIDA.
NICKEL AND CHROMIUM PLATING FIXED
WITH GALVANIC TREATMENT, THICKNESS
30/50 µ, GLOSSY FINISH.
7. UNI 10782

CURA E MANUTENZIONE CARE AND MAINTENANCE



CROMATO / CHROMED

VERNICIATURA METALLO METAL COATING

*

1. OLVERI EPOSSI-POLIESTERE
TERMOINDURENTI APPLICATE
ELETTROSTATICAMENTE, SPESSORE 70/90µ,
GLOSS 2-10, FINITURA BUCCIATA
ANTIGRAFFIO.
EPOXY-POLYESTER THERMOSETTING
OWDERS ELECTROSTATICALLY FIXED,
THICKNESS 70/90 µ, GLOSS 2-10,
ANTI-SCRATCH EMBOSSED FINISH.
7. UNI EN ISO 9227

CURA E MANUTENZIONE CARE AND MAINTENANCE



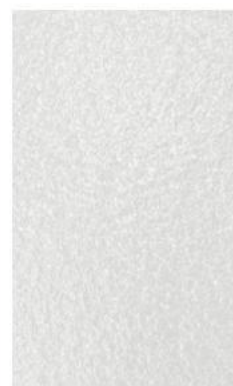
NERO
BLACK



GRIGIO ARGENTO
SILVER GREY RAL 9006



TORTORA
DOVE GREY RAL 1019



BIANCO
WHITE RAL 9016



BRONZO
BRONZE

NOTE NOTES

*I Colori disponibili per ogni linea di prodotto sono elencati nel catalogo generale e nel listino prezzi / The available colours for each product line are listed in the general catalogue and in the price list

** Colori disponibili solo per serie LIBERA LI/LC e serie LIBERA LP/LS / Colours available only for line LIBERA LI/LC and line LIBERA LP/LS



Casa Terra Design GmbH
Hauptstrasse 15
8586 Erlen
Tel. +41 71 558 08 06
info@casaterra.ch
www.casaterra.ch