

Challenger

Challenger is a chrome-free semi-aniline leather with a soft and pleasant feel. They are raw hides without humps and burn marks. There are 34 different shades to choose from.

On request and as an additional cost, the product can also be flameproofed extra for the fire safety requirement, 5852 Crib 5.

This leather has been produced in a sustainable way with extra consideration for people and the environment. Challenger is produced by a reputable Italian family company with manufacturing in the mountains of northern Italy. In the development of Challenger, local conditions have been taken into account. The clean water from the mountain river makes the skins extra soft and reduces the need for additives. The water is purified before it is released back into the river and careful checks are carried out by several actors. The sludge that is separated from the waste water is dried and used for energy production in cogeneration plants. During production, only vegetable oils are used and the raw hides are dried at low temperatures, which also contributes to increased softness. Challenger is produced only from European raw hides of controlled origin and has a long life.

Chrome-free leather.

Average size: 5 m²

Thickness: 1.1 - 1.3 mm

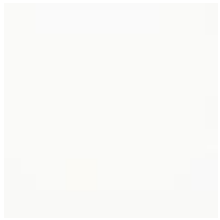
Recommended leather care product: Leather Master Premium

Uses:

Cladding decoration, Furniture upholstery public environment, Furniture lining, Upholstery marine environment IMO

Average size (m ²):	5 m ²	Colour fastness to rubbing - dry:	4-5 (ISO 11640)
Thickness (mm):	1,1-1,3 mm	Colour fastness to rubbing - wet:	4-5 (ISO 11640)
Quality:	Semi aniline	Color Fastness To Light:	6-7 (ISO 105-B02)
Råhudar:	EUROPEAN	Colour fastness to waterspottning:	5 (ISO 15700)
Fire test:	BS 5852-1 Source 0 & 1, Cal TB 117, EN 1021-1, IMO 2010 FTP Code part 8, ISO 3795	Cold cracking resistance:	-10°C (ISO 17233)
Rivstyrka:	≥ 20 N (ISO 3377-1)	Colour fastness to rubbing - artificial sweat:	4-5 (ISO 11641)
Flexing resistance:	> 20000 (ISO 5402-1)	Adhesion - surface finish Dry:	> 5 N/10mm (ISO 11644)
		Adhesion - surface finish Wet:	> 5 N/10mm (ISO 11644)





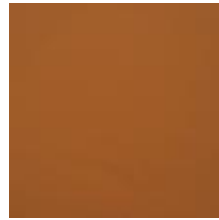
Leather Challenger
White 010
1100700



Leather Challenger
Eggshell 020
1100701



Leather Challenger
Wheat 016
1100702



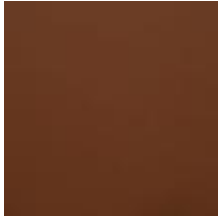
Leather Challenger
Brick 026
1100703



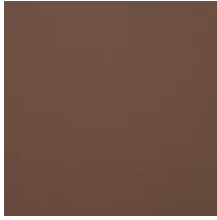
Leather Challenger
Brandy 036
1100704



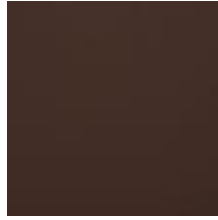
Leather Challenger
Mud 046
1100705



Leather Challenger
Castagne 056
1100706



Leather Challenger
Latte 066
1100707



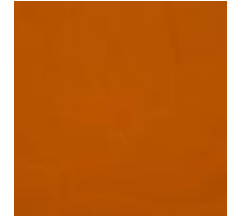
Leather Challenger
Coffe 076
1100708



Leather Challenger
Dark Brown 086
1100709



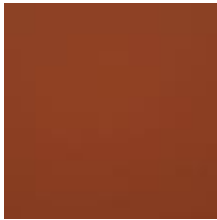
Leather Challenger
Mustard 005
1100710



Leather Challenger
Mais 015
1100711



Leather Challenger
Cognac 025
1100712



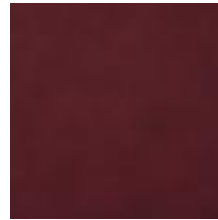
Leather Challenger
Rust 035
1100713



Leather Challenger
Rosso 001
1100714



Leather Challenger
Antique Red 011
1100715



Leather Challenger
Raspberry 021
1100716



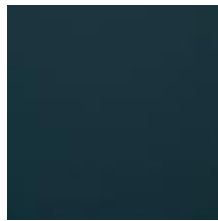
Leather Challenger
Olive 003
1100717



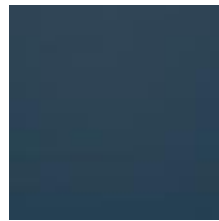
Leather Challenger
Dark Green 013
1100718



Leather Challenger
Cobalt 023
1100719



Leather Challenger
Petrol 033
1100720



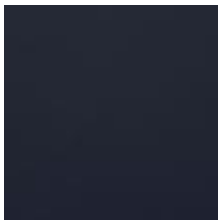
Leather Challenger
Baltic 043
1100721



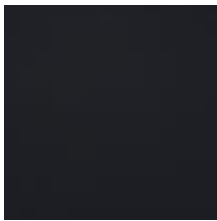
Leather Challenger
Violet 031
1100722



Leather Challenger
Royal Blue 022
1100723



Leather Challenger
Blue 012
1100724



Leather Challenger
Dark Blue 002
1100725



Leather Challenger
Light Grey 007
1100726



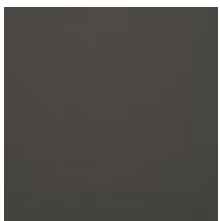
Leather Challenger
Fog 017
1100727



Leather Challenger
Grey 027
1100728



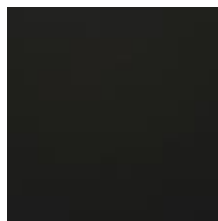
Leather Challenger
Smoke 037
1100729



Leather Challenger
Iron 047
1100730



Leather Challenger
Stone 057
1100731



Leather Challenger
Black 004
1100732